

# THE DATATAG LEISURE VEHICLE SYSTEM FITTING INSTRUCTIONS A QUICK FIT INSTALLATION GUIDE



Thank you for purchasing the Datatag Leisure Vehicle Security Marking and Registration System.

Please read these instructions fully before installation.

## How Does Datatag Help Protect My Leisure Vehicle?

Professional thieves like to steal property which can be made difficult to trace and therefore easy to dispose of. Datatag makes your Leisure Vehicle much easier to identify thereby reducing its desirability to thieves.

## How Does The System Work?

The Primary Visible ID Number Plates, Secondary Visible ID Labels and unique RFID Transponder Codes will be registered on the Datatag secure database together with your personal details. Enquiries made to the Datatag database by the Police will provide the information to identify the Leisure Vehicle System.

## What Happens If My Leisure Vehicle Is Stolen?

First notify the police of the theft and obtain a crime reference number. Then contact Datatag on 0345 0700 440 quoting your membership number and we will flag a warning on our database.

## What Happens If I Sell My Leisure Vehicle?

The membership is transferable and for a small re-registration fee the new keeper can have their name and address added to our records. They will need to quote the membership number and provide proof of ownership/purchase.

## IN THIS DATATAG LEISURE VEHICLE SYSTEM YOU WILL FIND:



3x PRIMARY ID Labels  
(including 10 small QR Code Labels)



2x SECONDARY ID Labels  
(including 4 small QR Code Labels)



10x Window Warning Labels



3x RFID Transponders.



1 tube of Datadots® containing 100's of Datadots® including an invisible Datatag Forensic DNA with brush applicator.

## ADDITIONALLY: 1 Datatag Registration Form

**Registration** - The details of your Leisure Vehicle will be entered on the registration form and these will be stored in our secure database, which is accessible by the Police 24 hours a day. **Please follow the instructions on the registration form.** After we have received your completed online registration you will receive a letter of confirmation.

**NOTE:** Please allow 28 working days to receive your letter of confirmation.

## IMPORTANT - Datatag Leisure Vehicle System Installation Instructions

### BEFORE INSTALLATION

- 1) Check that the Datatag system has not been opened or tampered with.
- 2) You will need some solvent degreaser and a cloth to wipe clean the chosen area where the self adhesive ID Plates and RFID Transponders will be applied.
- 3) You may need a heat/hot air gun to warm any metal surfaces where the self adhesive ID Plates will be applied.

### ORDER OF INSTALLATION - 4 Simple Steps

(If you want to know more details on installation, please refer to the Leisure Vehicle System product page on the Datatag website [www.datatag.co.uk](http://www.datatag.co.uk) where you will find a link to the installation video).

#### 1) 3x PRIMARY ID Plates - (inc 10 smaller QR codes):

The Primary ID plates are to go in three places:

- **One on the A-Frame** - if caravan, (or front chassis area if motorhome),
- **One on the Offside Chassis Rail** of the vehicle (near the wheel arch),
- **One on the Roof** - if possible on the Offside Rear Corner (to read across the width and away from obstruction e.g. roof mounted accessories).

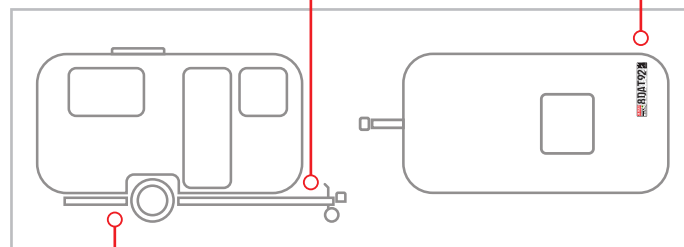
The smaller QR codes are to be placed around the outside of the vehicle in any convenient place but ideally: inside external lockers, power sockets, on the doors (on the horizontal top closing edge), etc.

Also for Motorhomes - fuel cap flap, under bonnet on inner wing, on any major 'cold' engine components e.g. airbox, brake fluid reservoirs, coolant reservoirs.

These QR codes can also be used on any external associated accessories such as awnings, steps, hook up power cables, fresh water and waste containers.

**WARNING** - When applying the ID Plates, **DO NOT** try and reposition them once placed as they are designed to break or tear if removed. The area

selected for the ID Plates needs to be clean and dry (*use solvent degreaser and a cloth to wipe clean the chosen area and allow it to dry*). If applying to metal surfaces e.g. A-Frame, **it is also strongly advised** the area is warm (*either by direct sunlight or by the use of a heat/hot air gun*) as the ID Plates will adhere much better to a warm surface. **PLEASE NOTE** that the adhesive is pressure sensitive, after application press the ID Plates to the Leisure Vehicle and remove any trapped air bubbles. Once applied please leave the ID Plates for 10 minutes then carefully peel away the protective application tape from the front of the ID Plates. If the application tape does not peel away from the ID Plates easily, applying a little water may aid in removal.



Datatag ID Ltd, Waterman's House, Waterman's Court, Lotus Park, The Causeway, Staines-upon-Thames, TW18 3AG

[www.datatag.co.uk](http://www.datatag.co.uk)

[info@datatag.co.uk](mailto:info@datatag.co.uk)

Tel: + 44 03 450 700 440



0000000000 Rev01 June 2025

## 2) 2x SECONDARY ID Plates - (inc 4 smaller QR codes):

One of these Secondary ID Labels is to be placed in the main Gas Locker with one of the smaller QR codes in the same place but not close to the main label. The other is to be placed inside the vehicle preferably close the fuse box or heating controllers and again a smaller QR code in a similar location. Once applied please leave the ID Plates for 10 minutes then carefully peel away the protective application tape from the front of the ID Plates. If the application tape does not peel away from the ID Plates easily, applying a little water may aid in removal.

The other 2 smaller QR codes can be placed on appliances such as the fridge or cooker but should be placed in a semi-covert way such as the inside the fridge door or grill door (see images).



## 3) 10x Window Labels:

These should be placed in the bottom right hand corner of each window where the QR code and serial number can be clearly read from the outside.



## 4) 3x RFID Transponders:

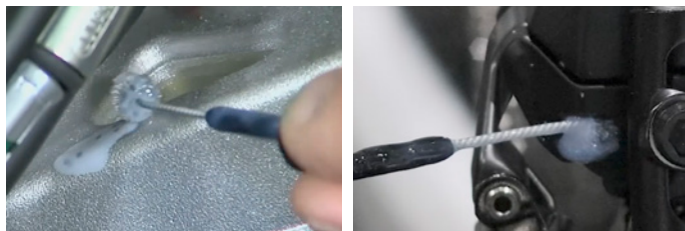
These need to be placed on a Non-Metal surface (wood, plastic or glass only) and preferable hidden, the optimal places are the toilet cassette void, inside the gas locker area and inside and internal cupboard anywhere in the vehicle - **the more covert the better.**



## 5) Datadots®:

Before applying the Datadots® please make sure the bottle is shaken for at least 2 minutes to mix the Datadots® with the adhesive, there is a small ball bearing in the bottle, this should be heard moving. Then apply the Datadots® containing the DNA solution onto as many parts of the Leisure Vehicle as possible ideally in small well protected locations including inside of all cupboards.

It is best to 'blob' the Datadots® and adhesive rather than 'smear' them. **WARNING:** do not apply to external bodywork. The adhesive will dry in 1-2 hours so it is advisable not to move the Leisure Vehicle for this time.



## IMPORTANT - REGISTERING YOUR LEISURE VEHICLE SYSTEM

After application of the Primary & Secondary ID Plates, RFID Transponders, Window Warning Labels and the Datadots®, please completed the online registration as per instructions on the registration card. Your Leisure Vehicle will only be registered once this is completed. A delay in doing this could have a major impact regarding Police enquiries and/or insurance cover.