

THE DATATAG OUTBOARD MOTOR SYSTEM FITTING INSTRUCTIONS

A QUICK FIT INSTALLATION GUIDE



IMPORTANT: Each Datatag system is carefully designed and pre-registered for specific products and can ONLY be insurance approved if fitted to the correct product. If you purchase a Datatag system but fit it to a different product (e.g. a marine system fitted to a bicycle or a hand tool system fitted to a motorcycle), we will NOT be able to register the product or provide registration documentation. Please ensure you purchase the correct Datatag system for the item you wish to protect - Details of our systems can be found at www.datatag.co.uk

Datatag allows for the major and valuable components of your outboard motor to be security marked and registered on our secure 24/7 database.

By combining state of the art identification technology such as the Datadot® identification system, unique radio frequency identification (RFID) tags and ultra destruct labels, Datatag's award winning system provides you with one of the most successful theft deterrents available.

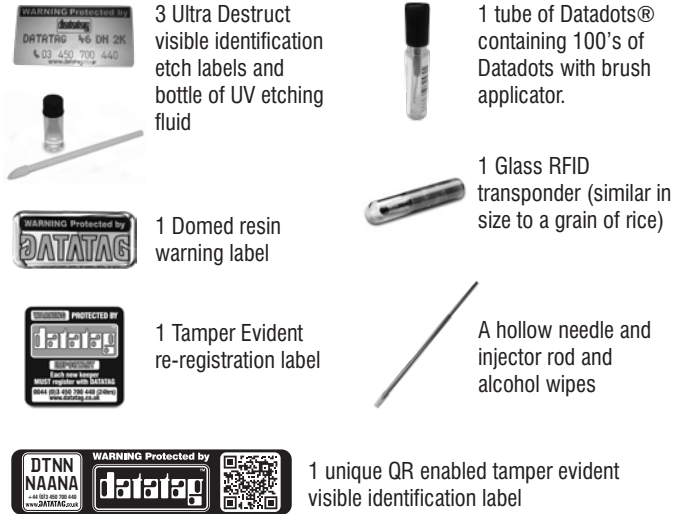
When installed correctly Datatag will greatly reduce the risk of the theft of your outboard motor.

Please take just a few minutes to read this guide to installation.

IMPORTANT

- The system must be registered via the online registration system with full owner details within 48 hours or as soon as possible after installation. Remember, your outboard motor is not protected until it is registered.
- For advice please call: (UK) 03 450 700 440

THE DATATAG SYSTEM INCLUDES THE FOLLOWING:



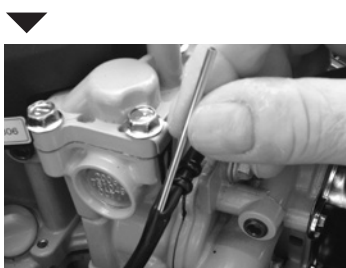
FITTING INSTRUCTIONS

1) The Glass "Grain of Rice" Size RFID Transponder - Wiring Loom

This RFID transponder can be used somewhere in the wiring harness beneath the engine cover.

- Find a suitable area of the wiring loom, ideally where a cable sheath is in place over the wires.
- Carefully insert the sharpened hollow needle into the wiring sheath at a very acute angle, ideally at a downward angle, taking care not to damage the wires. Try to insert the hollow needle at least 10mm into the wiring.
- Carefully insert the RFID tag into the end of the Hollow needle and use the solid rod to VERY gently push the tag to the end of the needle.
- Using the solid rod to hold the RFID tag in place, slowly withdraw the hollow needle from the wiring. Then gently remove the hollow rod. You may wish to place a small piece of insulation tape around the wire to fully seal the hole where the hollow needle was inserted.

NOTE! Transponders are unaltered by, and do not adversely affect signals or current within the loom, ignition or engine management systems.



2) Datadots®

- Each tube contains 100's of Datadots®; each dot within the tube carries the same unique ID information!
- Datadots are used to protect as many parts of the engine (beneath the engine cover) as possible; even if components are stripped from the original outboard motor, the Datadots can provide conclusive identification.
- Datadots are visibly read using special magnifiers, already issued to the Police and other official organisations.

IMPORTANT! The Datadots are suspended in a clear glue which may not dry to a perfect factory type "flat" paint finish therefore, do not apply Datadots® to overt areas where they may impair vision or look unsightly such as the external bodywork or on top of the engine cover. Ensure surfaces are always clean and dry prior to application.

Instructions

- Shake the tube well before use.
- Using the brush supplied within the tube, paint the dots onto the components or areas to be marked making sure that the dots are applied sparingly.
- Typically, mark the engine block, cylinders, fuel systems, wiring, throttle bodies, ignition systems.
- Try to apply the Datadots® in 'blobs' rather than 'smears'

NOTE: Try to apply all the Dots and Fluid contained in each system.

DO NOT USE ANY REMAINING DATADOTS® TO MARK ANY OTHER PROPERTY!



3) The 3 Ultra Destruct Visible Identification Labels



The 3 Ultra Destruct Visible ID labels are to mark the major structural components of your engine, for example:

- The lower leg & gear box
- The mid leg/shaft
- The lower part of the powerhead / lower engine cover

Procedure

- I. Make sure that the surface to be labeled is clean and dry, taking care to remove all dirt, oil, wax, grease and the previous cleaning chemicals or polish etc. Use the alcohol wipe provided if necessary.
- II. Peel the backing paper from the label and place on the location to be marked.
- III. Ensure the label is pressed firmly into place. When applying the Identification Labels **DO NOT** try and remove as they are designed to break or tear for security reasons.
- IV. Apply the Ultra-violet etching fluid over the unique code and telephone number area (only enough chemical is required to fill the holes) Etching fluid will be touch dry within 30 seconds.

Use the etching chemical sparingly. Do not allow chemical to run around the outside edge of the stencil, as it will react with the surface of the paintwork. If this happens remove it immediately with a damp cloth.



4) The Unique QR Code Enabled Tamper Evident Visible Identification Label



The Unique QR code enabled tamper evident visible identification label is one of the most important parts of the deterrent. This tamper evident label is the motors primary identification number and also contains the scannable QR code. Care must be taken when applying this label as once applied it cannot be removed.

To be fully effective the label should be installed in a location that is part of the main structure of the motor, is clearly visible and where the QR code can be scanned. It should not be applied on structures that are easily removed or swapped, or where the label will be subject to wear and tear that will result in damage (near the exhaust or pull start handle, on surfaces that will become very hot or areas that will become scuffed or are permanently immersed in water).

Discretion should be used to find a suitable alternative location, bearing in mind the essential requirements listed above.

Procedure

Having selected a suitable location for the label, clean the area with the supplied alcohol wipe or other suitable solvent cleaner and dry with a dry clean cloth.

UV Etching Fluid Handling & Safety Precautions

Storage

The fluid should be stored in cool conditions away from direct sunlight. It should be kept away from food and drink and out of reach of children.

Spillage

Spillage of the small quantity supplied in this system can be mopped up with tissue and disposed of with normal waste.

Handling Precautions

- Contains Dichloromethane
- Harmful if swallowed
- Avoid contact with skin and eyes
- Do not eat, drink or smoke while using
- Do not use near a naked flame

Peel away one edge of the backing sheet and apply the adhesive side of the label to the prepared surface. Continue to gently peel away the backing sheet, applying the label until it is in place. Smooth out the surface of the label using a dry clean cloth, ensuring that the label is properly pressed into the surface and any air bubbles are removed.

The label is tamper evident so once applied should not be adjusted or removed. Attempting to remove or adjust the label may result in the label tearing or distorting.

The label will become full tamper evident after around 12 hours and any attempt to remove or adjust the label after this time will result in the label breaking up.



THE DATATAG WARNING & RE REGISTRATION LABELS

5) Warning Label (Rectangular plastic domed label)



This warning label is a major part of the visible deterrent. It indicates to potential criminals that Datatag genuinely protects your outboard motor and there is too high a risk of being traced if they were to steal it.

It is VERY important to apply the plastic domed warning label to a highly visible area such as the top of the engine cover.

The warning decal is designed to be applied ONCE and cannot be removed without damage.

Please take care to position the decal correctly.

Carefully ensure the selected surface is clean and dry; peel back just HALF of the protective backing. Place the edge with the backing onto the selected surface – so allowing it to be moved and positioned correctly. When you're happy with its position, carefully affix. Then pull the backing from behind the rest of the decal, thus uncovering the remaining adhesive and apply.



6) The square tamper evident re-registration Label



Fitting this label aids both the Police and future owners of the outboard motor to contact Datatag easily. This should ideally be placed on the inside of the engine cover.

The decal is designed to be applied ONCE and cannot be removed without damage. Please take care to position the decal correctly.

Carefully ensure the selected surface is clean and dry; peel back just HALF of the protective backing. Place the edge with the backing onto the selected surface - so allowing it to be moved and positioned correctly. When you're happy with its position, carefully affix. Then pull the backing from behind the rest of the decal, thus uncovering the remaining adhesive and apply.



Safety Information

Eye Contact - Wash eye(s) thoroughly for at least ten minutes. Seek immediate medical attention.

Skin Contact - Wash off with soap and water. Product is harmless to skin but may temporarily stain.

Swallowing - The nature of the product makes it impossible to ingest in harmful quantities except by deliberate action. If a quantity is swallowed, seek immediate medical attention. Show these instructions to the Doctor.

Inhalation - If the fluid is used in the quantity supplied for its specific use, it should be impossible to inhale sufficient vapour to cause any medical problems.

As a general precaution and in the interest of safety and hygiene, always wash hands thoroughly after use.